

Fleet Genius PRO

fleet management application

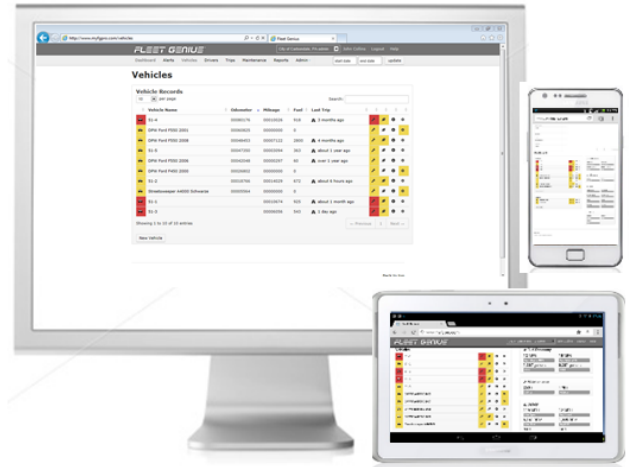
Prova's Fleet Genius® PRO fleet management application is a web-based fleet management tool that enables simpler management of vehicle fleets and their drivers.

The easy to use web system can be accessed through any browser on a PC, Mac, tablet or smartphone.

The system supports any vehicle in a fleet of any size and works with Prova's VHM line of OBD-2 fleet management monitors to help customers monitor, measure and manage their fleet.

Its features include:

- **Preventive Maintenance programs** to track upcoming and overdue maintenance on fleet vehicles;
- **Utilization management** to track usage, utilization and fuel economy for every trip;
- **Driver behavior management** to assist in managing the safe driving profiles of every driver in the fleet.



PRODUCT DATASHEET

Fleet Genius PRO supports:



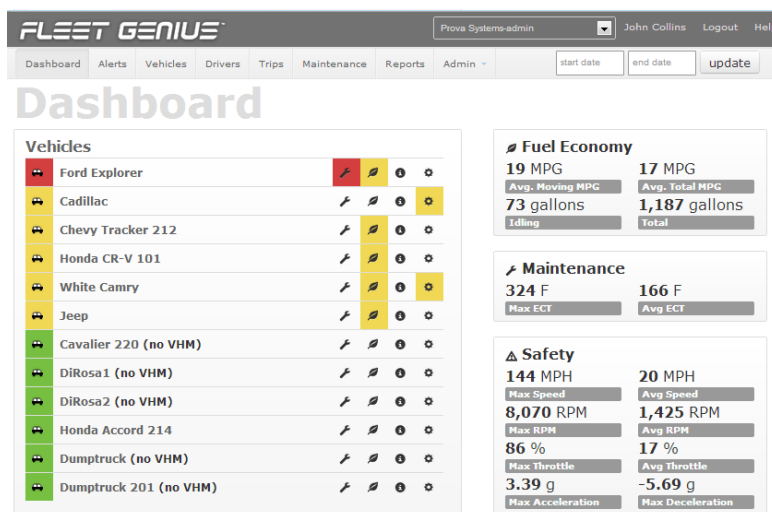
- Supports any vehicle with or without a VHM.
- Automated meter reading (miles, gallons, operating hours, odometer, fuel used)
- User configurable preventive maintenance schedules and email alerts
- User configurable driver behavior monitors and email alerts
- Full report capability
- And much more

SIMPLE TO USE COLOR CODED DASHBOARD INTERFACE

Fleet Genius PRO is accessed through its simple, color coded fleet DASHBOARD which provides an up-to-the minute analysis of the state of the fleet. The dashboard highlights every vehicle and driver along with a status indicator.

The system also provides overall fleet metrics for viewing trends and metrics for

- fleet fuel economy,
- driver safety issues,
- utilization trends,
- maintenance,
- engine diagnostics.



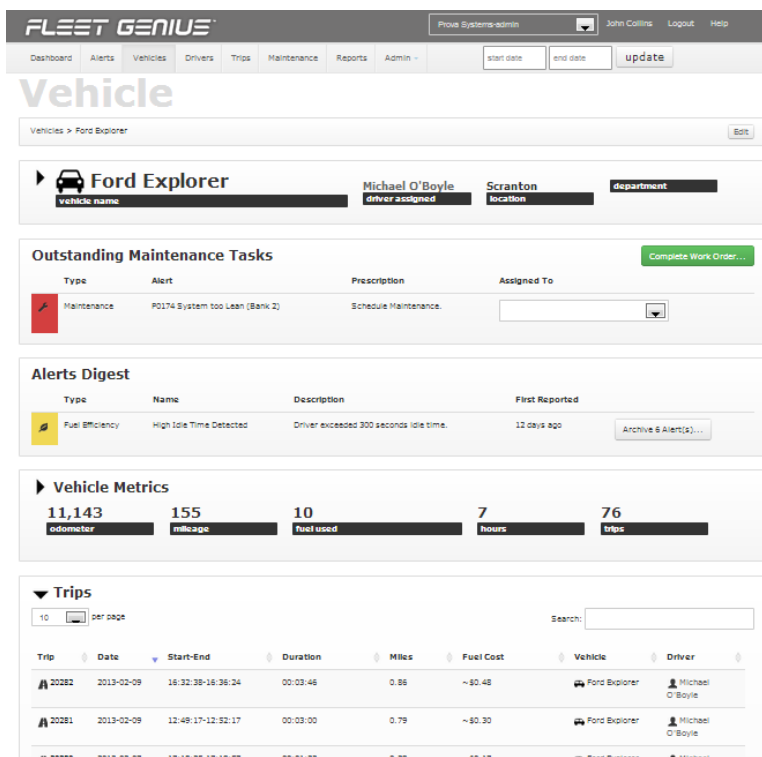
DETAILED VEHICLE TRIP, UTILIZATION AND MAINTENANCE RECORDS

Fleet Genius Pro vehicle records include details of every vehicles expected operating efficiencies and metrics that compare expected efficiencies against measured performance.

The vehicle detail record includes:

- Vehicle information including VIN and registration info,
- Individual trip tracking
- Preventive maintenance schedules and outstanding maintenance actions,
- System alerts for fuel economy, idle time and more,
- Engine diagnostics and DTC decodes,
- Driver behavior monitoring,
- Fuel economy tracking

Vehicles without VHM's report only maintenance activity and email alerts driven by updated odometer readings.



Prova Systems
 10 Enterprise Drive
 Carbondale, PA 18407
 Phone: +1.888.535.2704
 E-mail: sales@provasys.com



www.provasys.com

DETAILED DRIVER TRIP, UTILIZATION AND SAFETY BEHAVIOR RECORDS

Fleet Genius Pro driver records include details of every drivers utilization profile, safe driving record and fuel economy performance.

The vehicle detail record includes:

- Driver information including licenses, insurance coverage and other information,
- Individual trip tracking by date/time/ destination,
- System & email alerts for fuel economy, idle time, speeding, aggressive driving and more,
- Fuel economy tracking by driver

Vehicles without VHMs report only maintenance activity and email alerts driven by updated odometer readings.

The screenshot shows the 'Driver' record for Bruce Margolis. It includes a navigation bar with 'Alerts Digest', 'Driver Metrics', and 'Trips' sections.

Alerts Digest

Type	Name	Description	First Reported
Safety	Speeding Detected	SPEEDING > 70MPH for more than 120 seconds (2 mins)	4 days ago
Safety	High RPM Detected	Driver exceeded 5,000 RPM.	about 5 hours ago
Fuel Efficiency	High Idle Time Detected	Driver exceeded 300 seconds idle time.	6 days ago

Driver Metrics

alerts	611 mileage	38 hours	157 trips	35 fuel used	\$133 fuel cost
89 MPH	7 MPH	11 MPG	0.61 g	-0.71 g	
Max Speed	Avg Speed	Avg. Moving MPG	Max Acceleration	Max Deceleration	
5,999 RPM	982 RPM	8 MPG	219 F		
Max RPM	Avg RPM	Avg. Total MPG	Max ECT		
86 %	14 %	7 gallons	170 F		
Max Throttle	Avg Throttle	Idling	Avg ECT		
		35 gallons			
		Total			

Trips

Trip	Date	Start-End	Duration	Miles	Fuel Cost	Vehicle	Driver
20989	2013-02-14	11:46:45-11:48:37	00:01:52	0.20	~\$0.09	Jeep	Margolis

COMPLETED MAINTENANCE RECORD ARCHIVE

Completed maintenance archive for all completed maintenance events includes vendor information, actions taken, costs of parts and labor for every vehicle.

The screenshot shows the 'Maintenance Records' page. It features a table with columns for Id, Vehicle, Odometer, Date completed, Vendor, Invoice, and Total. The table lists 11 maintenance events for various vehicles, including Ford Explorers and a Cadillac.

Id	Vehicle	Odometer	Date completed	Vendor	Invoice	Total
1	Ford Explorer		2013-08-02	Master Tech		
2	Cadillac		2013-07-02	Master Tech		
4	Ford Explorer		2013-05-02	Master Tech	cv6567	\$15.00
6	Ford Explorer		2013-02-12	Master Tech	1	\$3.00
7	Ford Explorer		2013-02-13	Master Tech		
8	Ford Explorer		2013-02-13	Master Tech		
9	Ford Explorer		2013-02-13	Master Tech		
10	Ford Explorer		2013-02-13	Bob's Collision		
113	Ford Explorer		2013-06-02	Master Tech	cv32342	\$905.00
118	Cadillac	100,000	2013-08-02	Master Tech	cv34567	\$116.00

FULL SYSTEM, VEHICLE, TRIP AND DRIVER LEVEL REPORTING

Report on the entire range of data collected by Fleet Genius PRO and your vehicle's VHM's.

Reports include fleet level statistics and utilization data but also drill down to reveal complete details of the fleets operations.

Export fleet reports into CSV formatted files for further analysis or upload to other systems.

File away reports in PDF formats to complete monthly, quarterly or annual reporting requirements.

ID	Title	Description
1	Fleet Utilization Summary	Shows vehicle use compared with availability for the selected time period.
2	Preventative Maintenance	Shows anticipated vehicle maintenance activities for the next 30 days.
3	Overdue Maintenance	Shows scheduled vehicle maintenance which was not performed on time.
4	Monthly Maintenance Activity	Shows scheduled vehicle maintenance which was not performed on time.
5	Out-of-Service Vehicles	Shows vehicles which are not currently in service.
6	DTC Alerts	Shows recorded DTC alerts.
7	Trips	Shows a list of trips and related information for the given time period.
8	Trip Summary	Shows a list of trips and related information for the given time period.
9	Average Trip Distance and Daily Trips	Shows Average Trip Distance and Daily Trips for the given time period.

DETAILED TRIP RECORDS

Fleet Genius Pro trip detail records include details of every drivers utilization profile, safe driving record and fuel economy performance.

The vehicle detail record includes:

- Vehicle information,
- Driver information,
- Detailed speed, fuel use, acceleration and deceleration data and histograms,
- System & email alerts for fuel economy, idle time, speeding, aggressive driving and more,
- Fuel economy analysis
- Every trip idle event over 1 sec is recorded

Vehicles without VHM's report only maintenance activity and email alerts driven by updated odometer readings.

Metric	Value
Trip distance	48.89
Fuel used	1.31
Idle time	00:04:34
Max Speed	77 MPH
Avg Speed	38 MPH
Avg Moving MPG	38 MPG
Max RPM	3,205 RPM
Avg RPM	1,574 RPM
Avg Total MPG	37 MPG
Max RPM	34 %
Avg RPM	18 %
Avg Total MPG	0.03 gallons
Max Throttle	
Avg Throttle	
Idling	1.31 gallons
Total	
Max Acceleration	0.24 g
Max Deceleration	-0.31 g
Max ECT	198 F
Avg ECT	183 F

Prova Systems
10 Enterprise Drive
Carbondale, PA 18407
Phone: +1.888.535.2704
E-mail: sales@provasys.com



www.provasys.com